



Today's largest, most powerful tractors demand tougher track. It's why John Deere® chose Trackman® to create the first rubber track for its tractors. And Trackman continues to deliver groundbreaking innovations resulting in the most rugged track out there. Without question, our track handles more horsepower and delivers better traction to pull more weight. That means we can take on today's heaviest, most powerful tractors with total confidence.

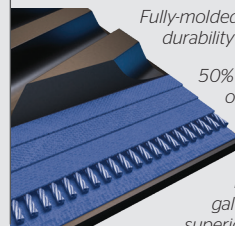
Trackman

for John Deere®

8000T, 9000T, 8RT, 9RT and 9RX Models



Constructed for Longer Life

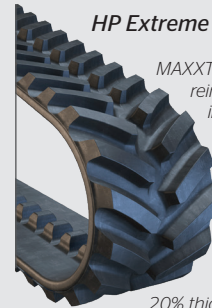


Fully-molded lugs deliver unsurpassed durability and longevity.

50% more wires per inch means our track is more durable and longer-lasting than the competition.

Exclusive patented galvanized cables offer superior corrosion resistance.

HP Extreme Track



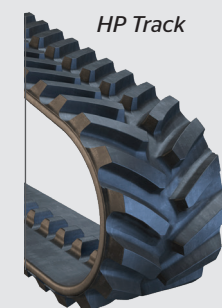
MAXXTUFF™ steel belt reinforcement is the strongest in the market today.

Wider center design means better clean-out.

Engineered with more usable tread rubber for longer life.

20% thicker carcass resists cuts, punctures and other damage.

HP Track



Double the wire dramatically improves track strength.

Stronger carcass reduces internal track temperatures and improves tread lug performance and wear life.

Trackman
OUTWORKS. OUTLASTS. OUTPERFORMS. OUT HERE.



TRACKMAN® RUBBER TRACK SPECIFICATIONS FOR JOHN DEERE® TRACTORS

| Product Code | Vehicle | Description | *Warranty Period | Width (in.) | Length (in.) | # of Tread Lugs | Tread Pitch (in.) | Tread Lug Height (in.) | # of Guide Lugs | MAXXTUFF™ Layers | Carcass Thickness (in.) | Ship Weight (lb.) |
|-----------------------------|-------------------------|----------------------------|----------------------|-------------|--------------|-----------------|-------------------|------------------------|-----------------|------------------|-------------------------|-------------------|
| John Deere 8000T | | | | | | | | | | | | |
| 527850 | JOHN DEERE 8000T | Trackman® HP | 4-Year | 16 | 324 | 108 | 6.0 | 2.0 | 54 | 3 | 1.25 | 873 |
| 528240 | JOHN DEERE 8000T | Trackman® HP | 4-Year | 18 | 324 | 108 | 6.0 | 2.0 | 54 | 3 | 1.25 | 943 |
| 527860 | JOHN DEERE 8000T | Trackman® HP | 4-Year | 24 | 324 | 108 | 6.0 | 2.0 | 54 | 3 | 1.25 | 1147 |
| 527870 | JOHN DEERE 8000T | Trackman® HP | 4-Year | 30 | 324 | 108 | 6.0 | 2.0 | 54 | 3 | 1.25 | 1356 |
| 613530 | JOHN DEERE 8000T | Trackman® HP EXTREME | 4-Year | 16 | 325 | 84 | 7.7 | 2.75 | 42 | 4 | 1.50 | 969 |
| 613540 | JOHN DEERE 8000T | Trackman® HP EXTREME | 4-Year | 18 | 325 | 84 | 7.7 | 2.75 | 42 | 4 | 1.50 | 1068 |
| 616430 | JOHN DEERE 8000T | Trackman® HP EXTREME | 4-Year | 24 | 324 | 72 | 9.0 | 2.75 | 54 | 4 | 1.50 | 1360 |
| 616440 | JOHN DEERE 8000T | Trackman® HP EXTREME | 4-Year | 30 | 324 | 72 | 9.0 | 2.75 | 54 | 4 | 1.50 | 1636 |
| John Deere 9000T | | | | | | | | | | | | |
| 616450 | JOHN DEERE 9000T | Trackman® HP Extreme | 4-Year | 30 | 378 | 84 | 9.0 | 2.75 | 84 | 3 | 1.50 | 1795 |
| 616460 | JOHN DEERE 9000T | Trackman® HP Extreme | 4-Year | 36 | 378 | 84 | 9.0 | 2.75 | 84 | 3 | 1.50 | 2250 |
| John Deere 8RT | | | | | | | | | | | | |
| 612140 | JD 8295RT/8320RT/8345RT | Trackman® HP | 4-Year | 16 | 354 | 118 | 6.0 | 2.0 | 59 | 4 | 1.25 | 931 |
| 612150 | JD 8295RT/8320RT/8345RT | Trackman® HP | 4-Year | 18 | 354 | 118 | 6.0 | 2.0 | 59 | 4 | 1.25 | 1012 |
| 613510 | JD 8295RT/8320RT/8345RT | Trackman® HP Extreme | 4-Year | 16 | 357 | 92 | 7.7 | 2.75 | 46 | 4 | 1.50 | 1048 |
| 613520 | JD 8295RT/8320RT/8345RT | Trackman® HP Extreme | 4-Year | 18 | 357 | 92 | 7.7 | 2.75 | 46 | 4 | 1.50 | 1157 |
| 616470 | JD 8295RT/8320RT/8345RT | Trackman® HP Extreme | 4-Year | 24 | 357 | 78 | 9.0 | 2.75 | 78 | 4 | 1.50 | 1480 |
| 616480 | JD 8295RT/8320RT/8345RT | Trackman® HP Extreme | 4-Year | 30 | 357 | 78 | 9.0 | 2.75 | 78 | 4 | 1.50 | 1754 |
| John Deere 9030T/9RT | | | | | | | | | | | | |
| 616490 | JD 9430T/9530T/9630T | Trackman® HP Extreme | 4-Year AG, 2-Year SC | 30 | 387 | 86 | 9.0 | 2.75 | 86 | 4 | 1.50 | 2015 |
| 616510 | JD 9430T/9530T/9630T | Trackman® HP Extreme | 4-Year AG, 2-Year SC | 36 | 387 | 86 | 9.0 | 2.75 | 86 | 4 | 1.50 | 2261 |
| John Deere 9RX | | | | | | | | | | | | |
| 617080 | JOHN DEERE 9RX | Trackman® T700 XP ARMOR AG | 4-Year AG, 2-Year SC | 30 | 270 | 90 | 6.0 | 2.0 | 45 | 4 | 1.35 | 1196 |
| 617090 | JOHN DEERE 9RX | Trackman® T700 XP ARMOR AG | 4-Year AG, 2-Year SC | 36 | 270 | 90 | 6.0 | 2.0 | 45 | 4 | 1.35 | 1399 |

*For full warranty details, please refer to www.locperformance.com/trackman.
Please note: tracks used on scraper applications have a 2-year limited warranty.





Just like our track, our warranty is second to none.

In accordance with the Loc Performance Trackman Rubber Track warranty, the track is covered against material and/or workmanship defects. For complete warranty information, contact your Rubber Track dealer or visit our website at www.locperformance.com.

Locate a Dealer
Locperformance.com/trackman
1-877-394-0482



Follow Us  

AMERICAN OWNED, AMERICAN MADE.



Trackman